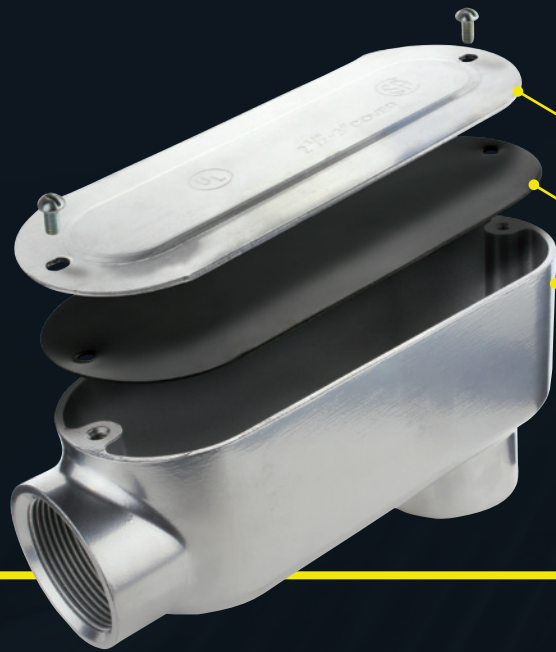




THREADED CONDUIT BODIES STANDARD MATERIALS AND FINISHES:

- Covers** - Aluminum with steel screws
- Gaskets** - Neoprene
- Bodies** - Corrosion-resistant, copper-free die-cast aluminum



LB



Type LB Conduit Body

- Features a straight in-line entry with a rear-exit outlet.
- Used where conduit systems transition from an exterior wall, ensuring weather-resistant access.

LR



Type LR Conduit Body

- Features a straight in-line entry with a right-side outlet.
- Attach to IMC conduit to change direction while maintaining accessibility for splicing and maintenance.

LL



Type LL Conduit Body

- Features a straight in-line entry with a left-side outlet.
- Designed for making 90-degree bends in conduit runs while allowing easy wire pulling and maintenance.

T



Type T Conduit Body

- Features a straight in-line entry with left and right outlets, allowing 3-way in-line access.
- Provide easy access for splicing and pulling and can correct and change direction of conduit runs.

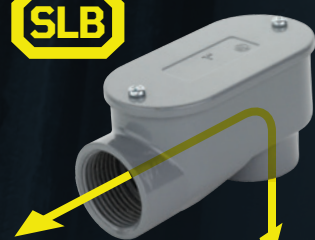
C



Type C Conduit Body

- Features in-line inlet and outlet positioned above and below the access cover for straight-through conductor runs.
- Ideal for pulling conductors in continuous, straight conduit runs providing accessible pulling points for easier wire installation and maintenance.

SLB



Type SLB Conduit Body

- Features a straight in-line entry with a rear-exit outlet.
- Use for service entrance applications, providing accessible wire pulling and maintenance points.



CONDUIT BODIES

DIE CAST ALUMINUM CONDUIT OUTLET BODIES, COVERS & GASKETS FOR RESIDENTIAL AND COMMERCIAL APPLICATIONS



THREADED CONDUIT BODIES - WITH STAMPED COVER AND NEOPRENE GASKET ALUMINUM

APPLICATION: Use to gain access to the interior of a raceway for wire pulling, splicing (with limitations as specified by the NEC), and maintenance. Indoors or outdoors.



SIZE	TITAN3 #	TYPE	APPLICATION	UNIT UPC	INNER I2of5	CTN QTY
TYPE: LB						
1/2"	TFRBBA-50-1	RIGID	CONDUIT BODY	8-10150-04024-1	108-10150-04024-8	5
3/4"	TFRBBA-75-1	RIGID	CONDUIT BODY	8-10150-04025-8	108-10150-04025-5	10
1"	TFRBBA-100-1	RIGID	CONDUIT BODY	8-10150-04026-5	108-10150-04026-2	3
1-1/4"	TFRBBA-125-1	RIGID	CONDUIT BODY	8-10150-04027-2	108-10150-04027-9	2
1-1/2"	TFRBBA-150-1	RIGID	CONDUIT BODY	8-10150-04028-9	108-10150-04028-6	2
2"	TFRBBA-200-1	RIGID	CONDUIT BODY	8-10150-04029-6	108-10150-04029-3	1
2-1/2"	TFRBBA-250-1	RIGID	CONDUIT BODY	8-10150-04041-8	108-10150-04041-5	1
3"	TFRBBA-300-1	RIGID	CONDUIT BODY	8-10150-04042-5	108-10150-04042-2	1
3-1/2"	TFRBBA-350-1	RIGID	CONDUIT BODY	8-10150-04043-2	108-10150-04043-9	1
4"	TFRBBA-400-1	RIGID	CONDUIT BODY	8-10150-04044-9	108-10150-04044-6	1

SIZE	TITAN3 #	TYPE	APPLICATION	UNIT UPC	INNER I2of5	CTN QTY
TYPE: LR						
1/2"	TFRBRA-50-1	RIGID	CONDUIT BODY	8-10150-04033-3	108-10150-04033-0	5
3/4"	TFRBRA-75-1	RIGID	CONDUIT BODY	8-10150-04034-0	108-10150-04034-7	3
1"	TFRBRA-100-1	RIGID	CONDUIT BODY	8-10150-04035-7	108-10150-04035-4	2
1-1/4"	TFRBRA-125-1	RIGID	CONDUIT BODY	8-10150-04060-9	108-10150-04060-6	2
1-1/2"	TFRBRA-150-1	RIGID	CONDUIT BODY	8-10150-04061-6	108-10150-04061-3	2
2"	TFRBRA-200-1	RIGID	CONDUIT BODY	8-10150-04062-3	108-10150-04062-0	1
2-1/2"	TFRBRA-250-1	RIGID	CONDUIT BODY	8-10150-04063-0	108-10150-04063-7	1
3"	TFRBRA-300-1	RIGID	CONDUIT BODY	8-10150-04064-7	108-10150-04064-4	1
3-1/2"	TFRBRA-350-1	RIGID	CONDUIT BODY	8-10150-04065-4	108-10150-04065-1	1
4"	TFRBRA-400-1	RIGID	CONDUIT BODY	8-10150-04066-1	108-10150-04066-8	1

SIZE	TITAN3 #	TYPE	APPLICATION	UNIT UPC	INNER I2of5	CTN QTY
TYPE: LL						
1/2"	TFRBLA-50-1	RIGID	CONDUIT BODY	8-10150-04030-2	108-10150-04030-9	5
3/4"	TFRBLA-75-1	RIGID	CONDUIT BODY	8-10150-04031-9	108-10150-04031-6	3
1"	TFRBLA-100-1	RIGID	CONDUIT BODY	8-10150-04032-6	108-10150-04032-3	2
1-1/4"	TFRBLA-125-1	RIGID	CONDUIT BODY	8-10150-04053-1	108-10150-04053-8	2
1-1/2"	TFRBLA-150-1	RIGID	CONDUIT BODY	8-10150-04054-8	108-10150-04054-5	2
2"	TFRBLA-200-1	RIGID	CONDUIT BODY	8-10150-04055-5	108-10150-04055-2	1
2-1/2"	TFRBLA-250-1	RIGID	CONDUIT BODY	8-10150-04056-2	108-10150-04056-9	1
3"	TFRBLA-300-1	RIGID	CONDUIT BODY	8-10150-04057-9	108-10150-04057-6	1
3-1/2"	TFRBLA-350-1	RIGID	CONDUIT BODY	8-10150-04058-6	108-10150-04058-3	1
4"	TFRBLA-400-1	RIGID	CONDUIT BODY	8-10150-04059-3	108-10150-04059-0	1



SIZE	TITAN3 #	TYPE	STYLE	UNIT UPC	INNER I2of5	CTN QTY
TYPE: T						
1/2"	TFRBTA-50-1	RIGID	TYPE: T	8-10150-04038-8	108-10150-04038-5	5
3/4"	TFRBTA-75-1	RIGID	TYPE: T	8-10150-04039-5	108-10150-04039-2	3
1"	TFRBTA-100-1	RIGID	TYPE: T	8-10150-04040-1	108-10150-04040-8	2
1-1/4"	TFRBTA-125-1	RIGID	TYPE: T	8-10150-04067-8	108-10150-04067-5	2
1-1/2"	TFRBTA-150-1	RIGID	TYPE: T	8-10150-04068-5	108-10150-04068-2	2
2"	TFRBTA-200-1	RIGID	TYPE: T	8-10150-04069-2	108-10150-04069-9	1
2-1/2"	TFRBTA-250-1	RIGID	TYPE: T	8-10150-04070-8	108-10150-04070-5	1
3"	TFRBTA-300-1	RIGID	TYPE: T	8-10150-04071-5	108-10150-04071-2	1
3-1/2"	TFRBTA-350-1	RIGID	TYPE: T	8-10150-04072-2	108-10150-04072-9	1
4"	TFRBTA-400-1	RIGID	TYPE: T	8-10150-04073-9	108-10150-04073-6	1

SIZE	TITAN3 #	TYPE	STYLE	UNIT UPC	INNER I2of5	CTN QTY
TYPE: C						
1/2"	TFRBCA-50-1	RIGID	TYPE: C	8-10150-04036-4	108-10150-04036-1	5
3/4"	TFRBCA-75-1	RIGID	TYPE: C	8-10150-04037-1	108-10150-04037-8	3
1"	TFRBCA-100-1	RIGID	TYPE: C	8-10150-04045-6	108-10150-04045-3	2
1-1/4"	TFRBCA-125-1	RIGID	TYPE: C	8-10150-04046-3	108-10150-04046-0	2
1-1/2"	TFRBCA-150-1	RIGID	TYPE: C	8-10150-04047-0	108-10150-04047-7	2
2"	TFRBCA-200-1	RIGID	TYPE: C	8-10150-04048-7	108-10150-04048-4	1
2-1/2"	TFRBCA-250-1	RIGID	TYPE: C	8-10150-04049-4	108-10150-04049-1	1
3"	TFRBCA-300-1	RIGID	TYPE: C	8-10150-04050-0	108-10150-04050-7	1
3-1/2"	TFRBCA-350-1	RIGID	TYPE: C	8-10150-04051-7	108-10150-04051-4	1
4"	TFRBCA-400-1	RIGID	TYPE: C	8-10150-04052-4	108-10150-04052-1	1

SERVICE ENTRANCE ELL ALUMINUM

APPLICATION: Use to gain access to the interior of a raceway for wire pulling, inspections, and maintenance. Indoors or outdoors.



SIZE	TITAN3 #	TYPE	STYLE	UNIT UPC	INNER I2of5	CTN QTY
TYPE: SLB						
1/2"	TFRBSA-50-1	RIGID	SLB	8-10150-04074-6	108-10150-04074-3	10
3/4"	TFRBSA-75-1	RIGID	SLB	8-10150-04075-3	108-10150-04075-0	5
1"	TFRBSA-100-1	RIGID	SLB	8-10150-04076-0	108-10150-04076-7	3
1-1/4"	TFRBSA-125-1	RIGID	SLB	8-10150-04077-7	108-10150-04077-4	2
1-1/2"	TFRBSA-150-1	RIGID	SLB	8-10150-04078-4	108-10150-04078-1	2
2"	TFRBSA-200-1	RIGID	SLB	8-10150-04079-1	108-10150-04079-8	1

